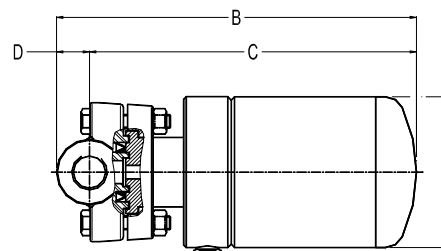
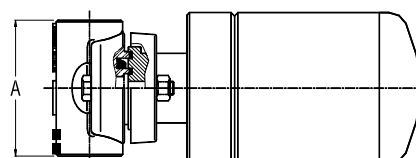


## UNIADCA PIPELINE CONNECTORS PLUS STEAM TRAPS Dimensions and weights

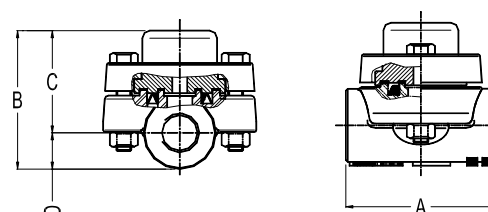
FS32XS and FS32XSS								
DIMENSIONS (mm)-Screwed							EN 1092-1 Flanges	
SIZE DN	A	B	C	D	E	WGT. Kgs	F	WGT. Kgs
15	80	212	193	19	90	3,9	150	5,5
20	80	212	193	19	90	3,9	150	6,2
25	80	212	198	24	90	4,5	160	7,2



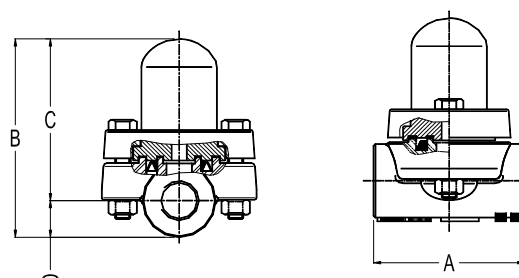
FS32HXS and FS32HXSS								
DIMENSIONS (mm)-Screwed							EN 1092-1 Flanges	
SIZE DN	A	B	C	D	E	WGT. Kgs	F	WGT. Kgs
25	80	285	261	24	142	9,3	160	12



TS22XS and TS22XSS							
DIMENSIONS (mm)-Screwed						EN 1092-1 Flanges	
SIZE DN	A	B	C	D	WGT. Kgs	F	WGT. Kgs
15	80	74	55	19	1,6	150	3,2
20	80	74	55	19	1,6	150	3,9
25	80	84	60	24	2,2	160	4,9



BS22XS and BS22XSS							
DIMENSIONS (mm)-Screwed						EN 1092-1 Flanges	
SIZE DN	A	B	C	D	WGT. Kgs	F	WGT. Kgs
15	80	105	86	19	1,8	150	3,4
20	80	105	86	19	1,8	150	4,1
25	80	105	91	24	2,4	160	5,1



BSR22XS and BSR22XSS							
DIMENSIONS (mm)-Screwed						EN 1092-1 Flanges	
SIZE DN	A	B	C	D	WGT. Kgs	F	WGT. Kgs
15	80	145	126	19	2	150	3,6
20	80	145	125	19	2	150	4,3
25	80	155	131	24	2,6	160	5,3

