

FLOAT AND THERMOSTATIC STEAM TRAPS

Twin Float Traps DN 80 DN 100

FLT 22 S/TW – Carbon steel / FLT 22 SS/TW – Stainless steel

DESCRIPTION

FLT 22/TW float and thermostatic (integral air vent) steam traps series are designed for all types of low and high pressure steam heating and process equipment. Typical applications include unit heaters, heat exchangers, driers, jacketed vessels and all the applications where continuous drainage is essential. Connections are flanged for horizontal application.

MAIN FEATURES

- Modulating discharge.
- Discharges condensate at steam temperature.
- Unaffected by sudden or wide load and pressure changes.
- Excellent air discharge (by thermostatic air vent).

USE: Saturated and superheated steam.

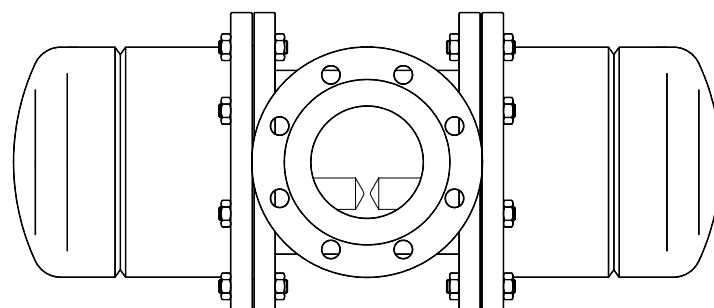
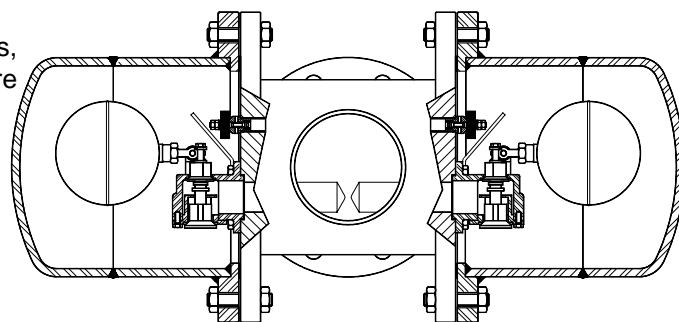
AVAILABLE

MODELS: FLT 22S/TW – Carbon steel
FLT22SS/TW – Stainless steel

SIZES: DN 80 – DN 100

CONNECTIONS: Flanged DIN or ANSI

INSTALLATION: Horizontal standard installation .



PMA – Max.allowable pressure 25 bar
 TMA – Max.allowable temperature 300 °C
 PMO – Max.operating pressure 21 bar
 TMO – Max.operating temperature 250 °C
 How to order:i.e. FLT22SS/TW DN 80 DIN

MAX. DIFFERENTIAL PRESSURE

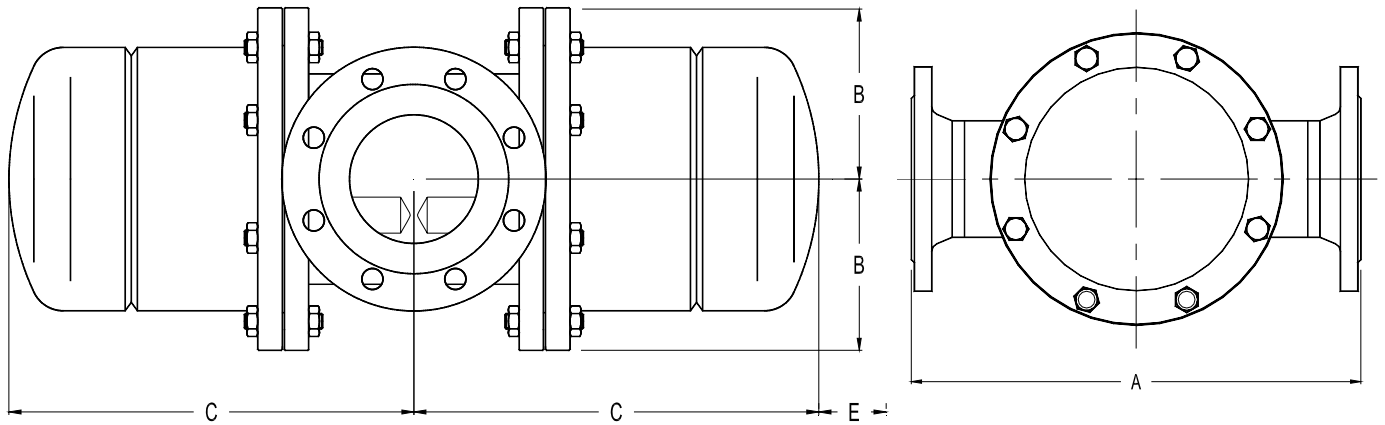
FLT22S/TW-4,5 : 4,5 bar
 FLT22S/TW-10 : 10 bar
 FLT22S/TW-14: 14 bar
 FLT22S/TW-21: 21 bar

Note: the same figures are valid for the FLT22SS/TW

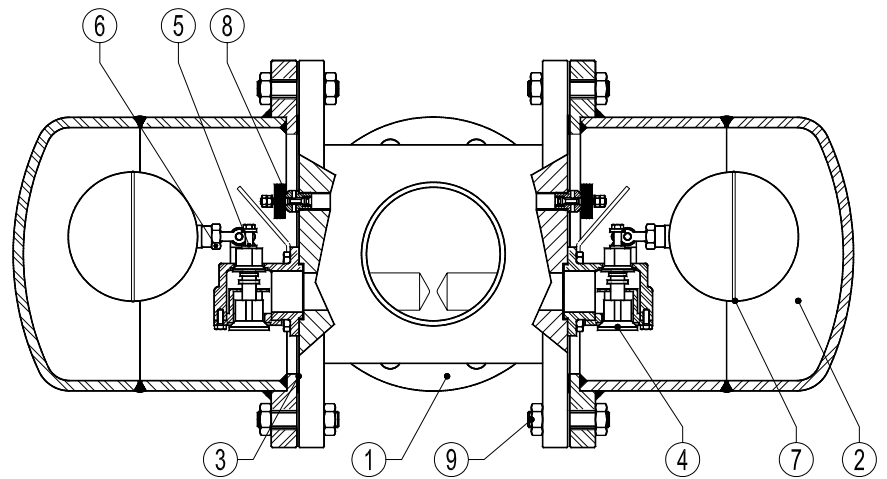
| CE MARKING (PED - European Directive 97/23/EC) | | |
|--|--------------|---------------|
| PN 16 | PN 25 | Category |
| DN80 - DN100 | -- | 1 (CE Marked) |
| -- | DN80 - DN100 | 2 (CE Marked) |

| FLOW RATE CAPACITY IN Kgs/h | | | | | | | | | | | | |
|-----------------------------|--------|-----------------------------|-------|-------|-------|-------|-------|-------|-------|-------|-------|-------|
| MODEL | SIZE | DIFFERENTIAL PRESSURE (bar) | | | | | | | | | | |
| | | 0,5 | 0,7 | 1 | 1,5 | 2 | 4,5 | 7 | 10 | 14 | 16 | 21 |
| FLT22S/TW-4,5 | 80-100 | 15100 | 18100 | 22000 | 28000 | 31000 | 45000 | | | | | |
| FLT22S/TW-10 | 80-100 | 7800 | 8900 | 10000 | 12200 | 14200 | 20000 | 27500 | 32000 | | | |
| FLT22S/TW-14 | 80-100 | 3800 | 4600 | 5400 | 6200 | 7200 | 10000 | 13800 | 16200 | 19600 | | |
| FLT22S/TW-21 | 80-100 | 3800 | 4600 | 5400 | 6200 | 7200 | 10000 | 13800 | 16200 | 19600 | 20000 | 24100 |

Note: the same figures are valid for the FLT22SS/TW



| DIMENSIONS (mm) | | | | | |
|-----------------|-----|-----|-----|-----|----------|
| SIZE DN | A | B | C | E | WGT. Kgs |
| 80 | 440 | 155 | 312 | 200 | 71,9 |
| 100 | 440 | 155 | 312 | 200 | 73,8 |



| MATERIALS | | | |
|-----------|-------------|---|-------------------------------------|
| POS.Nr. | DESIGNATION | MATERIAL FLT22S/TW | MATERIAL FLT22SS/TW |
| 1 | Body | P250GH / 1.0460 ; P235GH / 1.0305 ; S355J2G3 / 1.0570 ; S235JRG2/1.0038 | AISI316 / 1.4401 ; AISI304 / 1.4301 |
| 2 | Cover | P235GH / 1.0305 ; P265GH / 1.0425 ; S355J2G3 / 1.0570 | AISI316 / 1.4401 ; AISI304 / 1.4301 |
| 3 | *Gasket | Graphite | Graphite |
| 4 | *Seat | CF8 / 1.4308 | CF8 / 1.4308 |
| 5 | *Valve | AISI420 / 1.4021 | AISI420 / 1.4021 |
| 6 | *Lever | AISI304 / 1.4301 | AISI304 / 1.4301 |
| 7 | *Float | AISI304 / 1.4301 | AISI304 / 1.4301 |
| 8 | *Air vent | Stainless steel (Bimetalic) | Stainless steel (Bimetalic) |
| 9 | Bolts | Steel 8.8 | St. Steel - A2 |

*Available spare parts.