

FLOAT AND THERMOSTATIC STEAM TRAPS FLT32 (Cast steel DN1/2" - 1" ; DN15 - 25)

DESCRIPTION

FLT 32 float and thermostatic (integral air vent) steam traps series are designed for all types of low and high pressure steam heating and process equipment.

Typical applications include unit heaters, heat exchangers, driers, jacketed vessels and all the applications where continuous drainage is essential.

Connections are female screwed or flanged for horizontal or vertical installation.

MAIN FEATURES

Modulating discharge.

Discharges condensate at steam temperature.

Unaffected by sudden or wide load and pressure changes.

Excellent air discharge (by thermostatic air vent).

OPTIONS: SLR – steam lock release
Equalizing plug or vent connection
Internal strainer

USE: Saturated and superheated steam.

AVAILABLE

MODELS: FLT32-4,5 , 10 , 14 and 21.

SIZES: DN ½" - 1" – DN15 - 25

CONNECTIONS: Female screwed ISO7/1 Rp (BS21)

Flanged DIN

INSTALLATION: Standard horizontal installation –

From right to left FLT32 (R-L)

Upon request:

-horizontal installation with the flow from left to right (L-R)

-vertical installation with the flow from top to bottom (V)

PMA – Max.allowable pressure 40 bar

TMA – Max.allowable temperature 300 °C

PMO – Max.operating pressure 32 bar

TMO – Max.operating temperature 250 °C

How to order:i.e. FLT32-14 DN 1/2" BSP

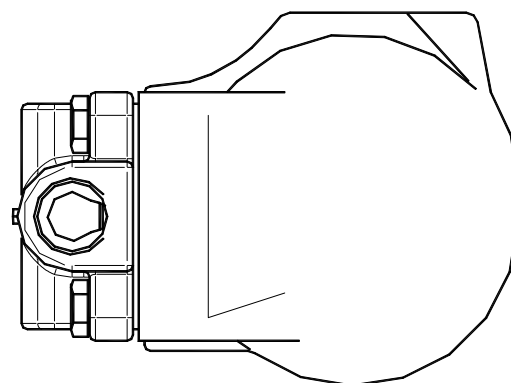
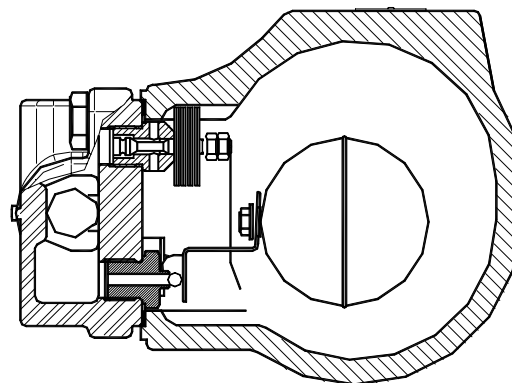
MAX. DIFFERENTIAL PRESSURE

FLT32-4,5 : 4,5 bar

FLT32-10 : 10 bar

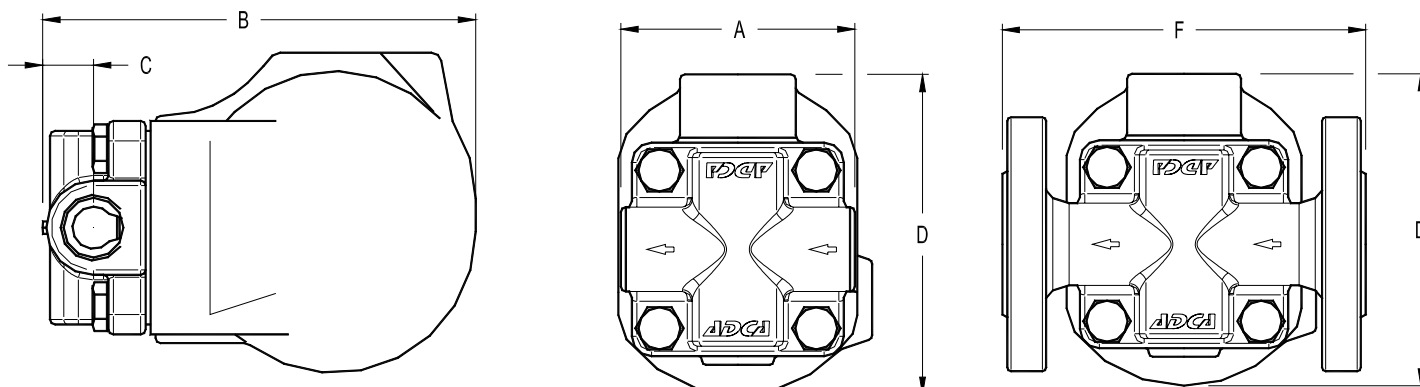
FLT32-14: 14 bar

FLT32-21: 21 bar

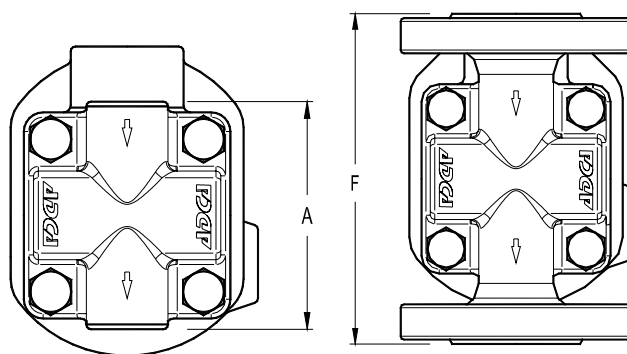


FLOW RATE CAPACITY IN Kgs/h

MODEL	SIZE	DIFFERENTIAL PRESSURE (bar)															
		0,5	1	1,5	2	3	4,5	6	7	8	9	10	12	14	16	21	
FLT32-4,5	15- 25	230	330	400	440	535	630										
FLT32-10	15- 25	150	200	250	280	340	400	460	495	520	550	595					
FLT32-14	15- 25	120	150	190	220	260	320	380	400	425	440	480	510	550			
FLT32-21	15- 25	60	80	90	115	135	160	190	200	220	230	240	260	270	290	300	



DIMENSIONS (mm)-Screwed						DIN Flanges	
SIZE DN	A	B	C	D	WGT. Kgs	F	WGT. Kgs
15	95	178	23	128	5,2	150	6,7
20	95	178	23	128	5,2	150	7,2
25	95	178	23	128	5,2	160	7,7



Vertical Installation (V)

MATERIALS		
POS.Nr.	DESIGNATION	MATERIAL
1	Body	GP240GH / 1.0619
2	Cover	GP240GH / 1.0619
3	*Gasket	Stainless st. / Graphite
4	*Seat	AISI 410 / 1.4006
5	*Valve	AISI 410 / 1.4006
6	*Lever	AISI 304 / 1.4301
7	*Float	AISI 304 / 1.4301
8	*Air vent	Stainless st. (Bimetallic)
9	Bolts	Steel 8.8

*Available spare parts.

