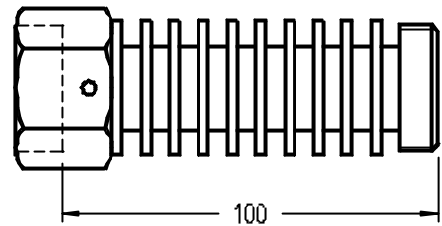


**“ADCATROL” TEMPERATURE REGULATORS**  
**TR 25 valves & T series thermostats**  
**Accessories**

**COOLING UNITS K1**

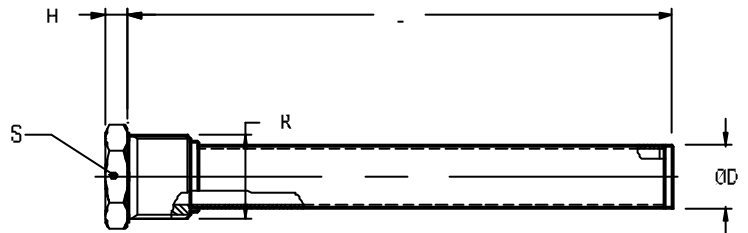
The cooling units are used in connection with control valves and thermostats to protect the stuffing box. At valve temperatures between 150°C and 250°C a cooling unit of type K1 connected downwards should be applied. For higher temperatures as well as for all hot oil systems please consult.



**SENSOR POCKETS PK**

Sensor pockets of stainless steel can be supplied to all TR series self-acting thermostats with rod sensors. They are used where it is impossible to empty the system or the tank.

Use of sensor pockets imply delay of heat transfer to the rod sensors and thus a longer reaction time for the controllers. This is to some extent counteracted by filling up the sensor pockets with paste or oil.



**INSTALLATION**

The installation site for the sensor pocket is arbitrary when paste is applied. When using oil the sensor pocket must point somewhat downwards.

**MATERIAL**

Stainless steel 1.4436

**LIMITING CONDITIONS**

40 bar at 120°C  
 24 bar at 350°C

DIMENSIONS (mm)					
Type	D	H	L	S	R
PK 2	25	9	218	36	1"
PK 4	25	10	390	45	1 1/4"