

## COMPRESSED AIR BALL FLOAT TRAPS FA 17/G ( DN40 – DN50 )

### DESCRIPTION

FA 17/G is a fully automatic ball float trap extremely compact in dimension and light in weight, specially design for draining water from compressed air lines.

Applications on aftercoolers, separators and compressed air mains.

Connections are flanged.

### MAIN FEATURES

Modulating discharge.

Unaffected by sudden or wide load and pressure changes.

OPTIONS: Horizontal reversible inlet connections.

USE: Compressed air and non corrosive gas, compatible with the construction.

### AVAILABLE

MODELS: FA 17 G

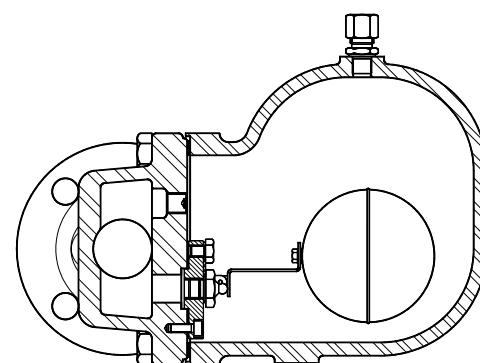
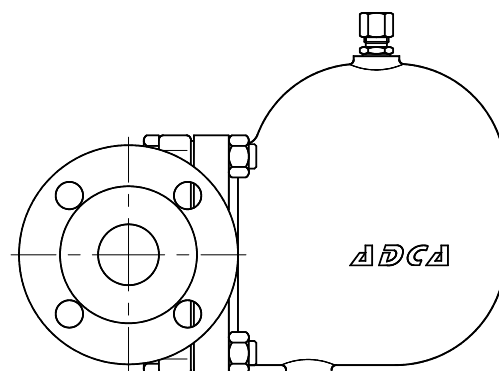
SIZES: DN 11/2" -2" ; DN 40 – DN 50.

CONNECTIONS: Female screwed ISO 7/1 Rp (BS21)  
Flanged EN 1092-2

INSTALLATION: Standard horizontal installation-flow from right to left (R-L).

Vertical installation with the flow from top to bottom (V).

See IMI installation and maintenance instructions.

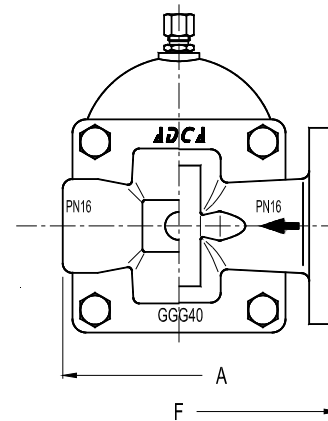
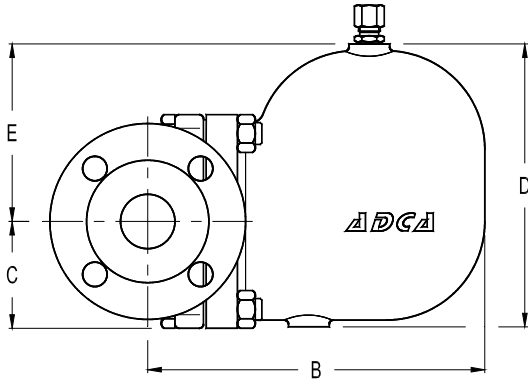


PMA – Max.allowable pressure	16 bar
TMA – Max.allowable temperature	250 °C
PMO – Max.operating pressure	14 bar
TMO – Max.operating temperature	200 °C

APPLICATION LIMITS	
Min.Liquid specific weight	0,75 Kg/dm3
Maximum working dif.pressure	14 bar

FLOW RATE CAPACITY IN Kg /h														
MODEL	SIZE	DIFFERENTIAL PRESSURE (bar)												
		0,5	1	1,5	2	3	4	6	7	8	9	10	12	14
FA17G	40 - 50	370	515	605	720	900	1005	1250	1340	1500	1560	1620	1750	1890

DIMENSIONS (mm)-Screwed							EN 1092-2 Flanges		
SIZE DN	A	B	C	D	E	WGT. Kgs	F	B	WGT. Kgs
40	210	248	79	208	131	16,9	230	248	20,3
50	210	248	79	208	131	17,5	230	248	20,3



MATERIALS		
POS.Nr.	DESIGNATION	MATERIAL
1	Body	GJS-400-15 / 0.7040
2	Cover	GJS-400-15 / 0.7040
3	* Gasket	St. Steel / Graphite
4	* Seat	AISI 304 / 1.4301
5	* Valve	AISI 304 / 1.4301
6	* Lever	AISI 304 / 1.4301
7	* Float	AISI 304 / 1.4301
8	Plug	St. Steel
9	Bolts	Steel 8.8

\*Available spare parts.

