

## COMPRESSED AIR BALL FLOAT TRAPS FA 32 ( Carbon Steel )

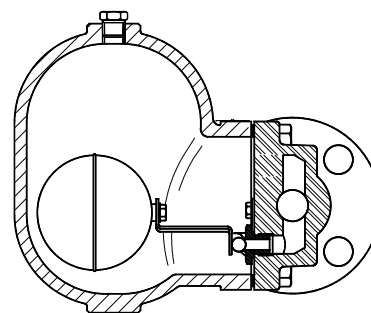
### DESCRIPTION

FA32 series compressed air float traps are specially design for draining water from high pressure compressed air and gas lines.

Applications on aftercoolers, separators and compressed air and gas mains.

An air balance pipe must be fitted allowing the air trapped in the trap body to escape, avoiding obstructing of condensate flow.

Connections are flange or female screwed.



### MAIN FEATURES

Modulating discharge.

Unaffected by sudden or wide load and pressure changes .

**OPTIONS:** Internal strainer (only on horizontal models).  
Equalizing and drain plug on body.  
Lifting lever.

**USE:** Compressed air and non corrosive gas compatible with the construction.

### AVAILABLE MODELS:

FA 32-21 , FA32-32.

### SIZES:

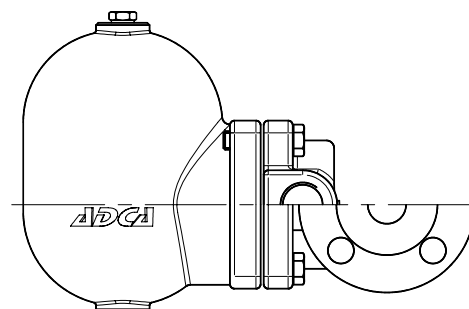
DN 1" - DN 25.

### CONNECTIONS:

Female screwed ISO 7/1Rp(BS21)  
Flanged EN 1092-1 PN40.  
Special flanges upon request.

### INSTALLATION

Horizontal or vertical installation.



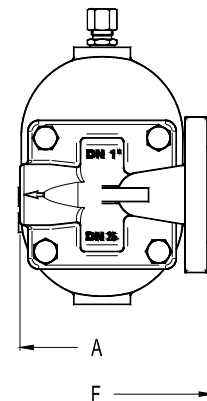
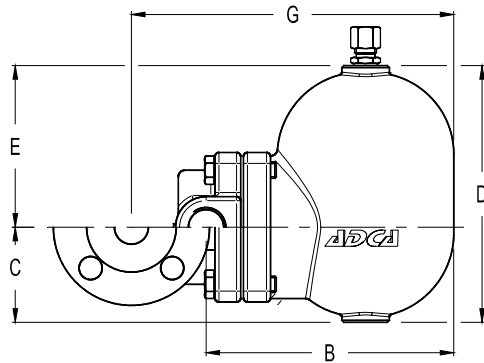
CE MARKING (PED - European Directive 97/23/EC)	
PN 40	Category
DN25 - DN1"	1 (CE Marked)

PMA – Max.allowable pressure                      40 bar  
TMA – Max.allowable temperature                300 °C  
PMO – Max.operating pressure                    32 bar  
TMO – Max.operating temperature               200 °C

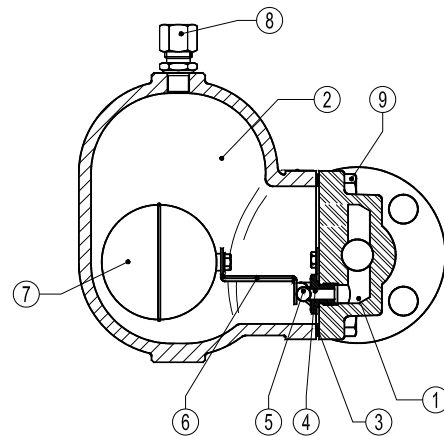
APPLICATION LIMITS	
Min.Liquid specific weight	0,75 Kg/dm3
Maximum working dif.pressure-FA32-21	21 bar
Maximum working dif.pressure-FA32-32	32 bar

FLOW RATE CAPACITY IN Kgs/h																
MODEL	SIZE	DIFFERENTIAL PRESSURE (bar)														
		1	1,5	2	3	4,5	6	7	8	9	10	12	14	16	21	32
FA32-21	1" - 25	410	500	600	710	900	1005	1100	1150	1200	1350	1550	1640	1700	1850	
FA32-32	1" - 25	240	280	335	400	500	590	610	690	700	745	850	900	920	1100	1380

DIMENSIONS (mm)-Screwed							EN 1092-1 Flanges		
SIZE DN	A	B	C	D	E	WGT. Kgs	F	G	WGT. Kgs
25	120	195	80	190	110	9	160	248	11,3



MATERIALS		
POS.Nr.	DESIGNATION	MATERIAL
1	Body	GP240GH / 1.0619
2	Cover	GP240GH / 1.0619
3	*Gasket	Stainless st. / Graphite
4	*Seat	AISI 410 / 1.4006
5	*Valve	AISI 410 / 1.4006
6	*Lever	AISI 304 / 1.4301
7	*Float	AISI 304 / 1.4301
8	**Compression fitting	St. Steel or Steel Fe / Zn
9	Bolts	Steel 8.8



\*Available spare parts. \*\* Optional

### Typical Installation

