

AIR ELIMINATORS FOR WATER SYSTEMS AE 32 (Carbon Steel)

DESCRIPTION

The AE32 carbon steel air eliminator removes air from hot and superheated water systems and is also suitable for all liquids compatible with the construction, providing that their specific gravity is not less than 0,75 Kg/dm³.

This ball float type automatic air eliminator can be used in combination with other air elimination and separation systems or directly applied at high points in the piping.

Connections are female screwed or flanged for horizontal or vertical installation

MAIN FEATURES

Corrosion-resistant working parts.

Replaceable internal parts.

OPTIONS: Internal strainer (only on horizontal models).

USE: Cold, hot and superheated water systems.

AVAILABLE MODELS: AE 32-17

SIZES: DN 1", DN 25.

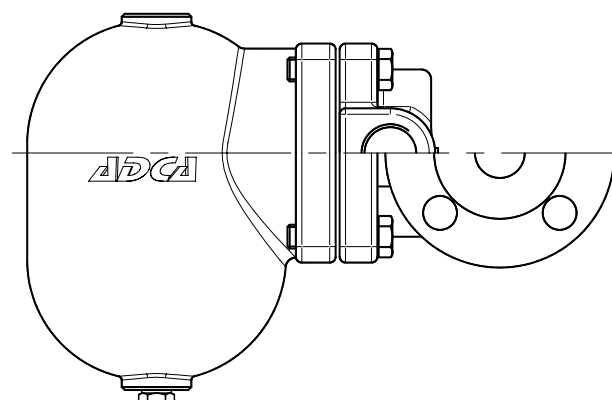
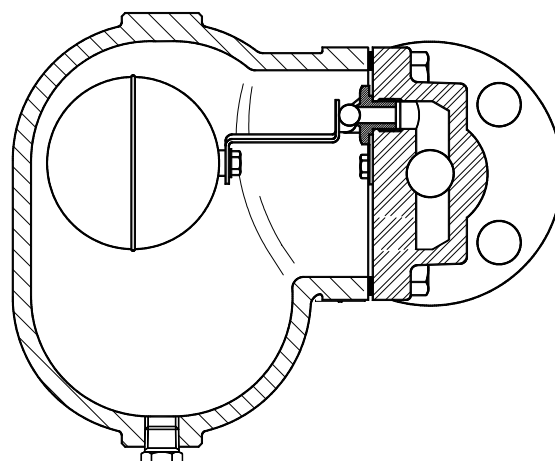
CONNECTIONS: Female screwed ISO 7/1Rp(BS21).
Flanged EN 1092 -1.
Special flanges upon request.

INSTALLATION Horizontal or vertical installation (on request). It must be installed with the float lever in horizontal plane, so that it rises and falls vertically. It should be installed at the points in the plant where the air tends to collect.

The drain should be piped to a safe position.

See IMI installation and maintenance instructions.

PMA – Max. allowable pressure	40 bar
TMA – Max. allowable temperature	300 °C
PMO – Max. operating pressure	32 bar
TMO – Max. operating temperature	200 °C



CE MARKING (PED - European Directive 97/23/EC)

PN 40	Category
DN25 - DN1"	1 (CE Marked)

APPLICATION LIMITS

Min. Liquid specific weight	0,75 Kg/dm ³
Maximum working dif. pressure-AE32-17	17 bar

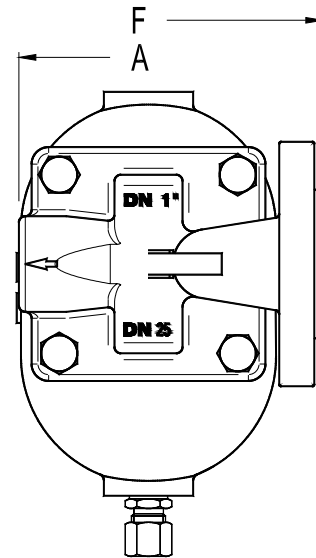
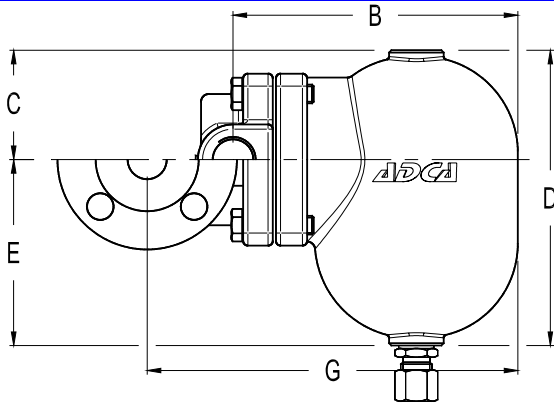
FLOW RATE CAPACITY IN N l/min.

MODEL	SIZE	DIFFERENTIAL PRESSURE (bar)								
		0,5	1	2	4	6	8	10	13	17
AE32-17	1" - 25	75	120	240	420	535	720	870	1200	1380

Capacities at a standard atmospheric pressure of 1bar and 20°C.

If the temperature differs from 15°C, the discharge capacity can be corrected by multiplying it by: $\frac{288}{273 + T}$, where T is the actual temperature in °C.

DIMENSIONS (mm)-Screwed							EN 1092-1 Flanges		
SIZE DN	A	B	C	D	E	WGT. Kgs	F	G	WGT. Kgs
25	120	195	80	200	110	9	210	248	11,3



MATERIALS		
POS.Nr.	DESIGNATION	MATERIAL
1	Body	GP240GH / 1.0619
2	Cover	GP240GH / 1.0619
3	*Gasket	Stainless st. / Graphite
4	*Seat	AISI 410 / 1.4006
5	*Valve	AISI 410 / 1.4006
6	*Lever	AISI 304 / 1.4301
7	*Float	AISI 304 / 1.4301
8	Compression fitting	Fe / Zn 12 - ISO 2081
9	Bolts	Steel 8.8

* Available spare parts.

