

DOUBLE WINDOW SIGHT GLASS DW 12 (Bronze)

DESCRIPTION

For monitoring the right operation of a steam trap to avoid leakage of live steam and consequently big energy losses, a sight glass is recommended to be installed downstream of the steam trap.

Double window DW sight glass, has been designed for this particular application.

Connections are female screwed .

OPTIONS: Borosilicate glass against extra price

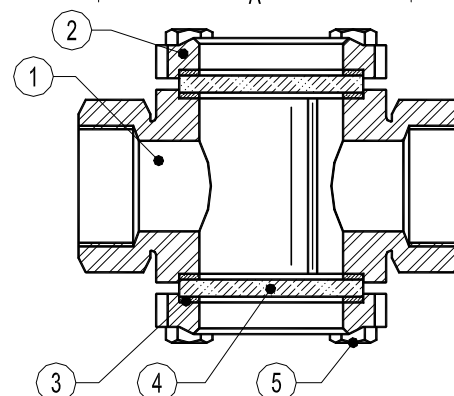
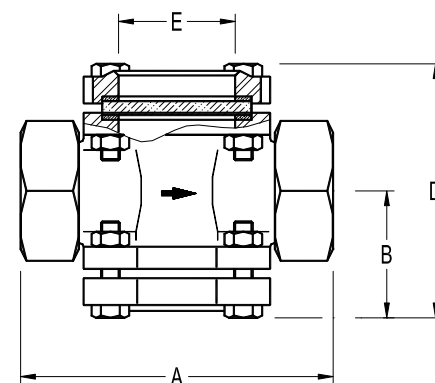
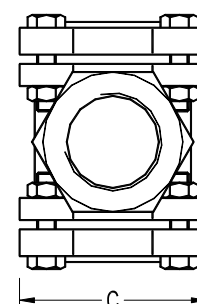
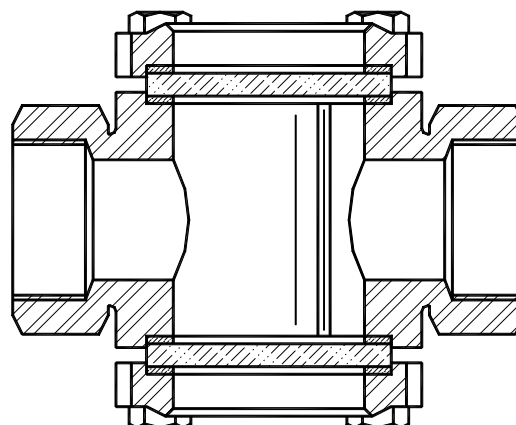
USE: Condensate pipes downstream steam traps.

AVAILABLE MODELS: DW 12

SIZES: DN 1 1/4" to DN 2 "

CONNECTIONS: Female screwed ISO 7/1Rp(BS21).

INSTALLATION: Horizontal or vertical installation.
See IMI, installation and maintenance instructions.



| LIMITING CONDITIONS (Tempered glass) | | LIMITING CONDITIONS (Borosilicate glass) | |
|---|---------------------|---|---------------------|
| ALLOWABLE PRESSURES | RELATED TEMPERATURE | ALLOWABLE PRESSURES | RELATED TEMPERATURE |
| 16 bar | -10 /120° C | 16 bar | -10 /120° C |
| / | / | 14,4 bar | 150 °C |
| / | / | 13,4 bar | 180 °C |
| / | / | 12,8 bar | 200 °C |

DIMENSIONS (m m)

| SIZE DN | A | B | C | D | E | WGT. Kgs |
|---------|-----|----|-----|-----|----|----------|
| 1 1/4" | 125 | 55 | 83 | 109 | 50 | 2,5 |
| 1 1/2" | 135 | 57 | 83 | 113 | 50 | 2,8 |
| 2" | 170 | 70 | 104 | 139 | 60 | 5 |

MATERIALS

| POS.Nr. | DESIGNATION | MATERIAL |
|---------|----------------|---------------------------|
| 1 | Body | Bronze B62 / ASTM B148-97 |
| 2 | Glass nut | Bronze B62 / ASTM B148-97 |
| 3 | * Gasket | St.Steel / Graphite |
| 4 | * Window glass | Tempered glass |
| 4 | * Window glass | Borosilicate |
| 5 | Bolts | Steel 8.8 |

*Available spare parts.