

DOUBLE WINDOW SIGHT GLASS DW 16 SS (Stainless Steel)

DESCRIPTION

For monitoring the right operation of a steam trap to avoid leakage of live steam and consequently big energy losses, a sight glass is recommended to be installed downstream the steam trap.

Double window DW sight glass, has been designed for this particular application.

Connections are female screwed or flanged .

OPTIONS: Different glasses and design on request.

USE: Condensate pipes downstream steam traps.

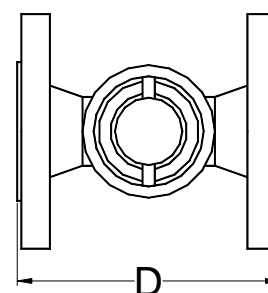
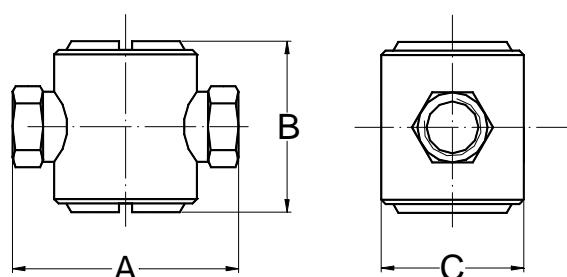
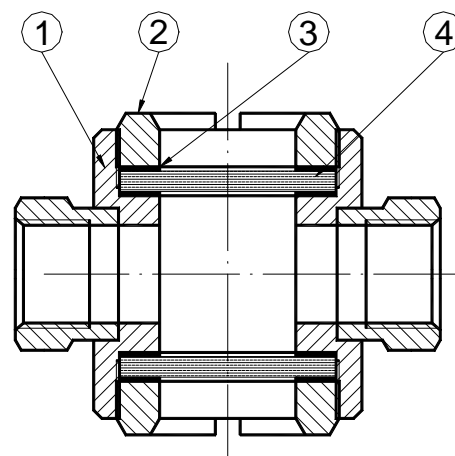
AVAILABLE MODELS: DW 16 SS - double window borosilicate glass.

SIZES: ½" to DN 1" - DN15 to DN25.
1 1/2" and 2" on request.

CONNECTIONS: Female screwed ISO 7/1Rp(BS21),
NPT (ANSI B1.20.1).
Flanged EN 1092-1 or ANSI (welded flanges).
Special flanges upon request.

INSTALLATION: Horizontal or vertical installation.
See IMI installation and maintenance instructions.

PMO – Max.operating pressure 12 bar
TMO –Max. operating temperature 280 °C
How to order: i.e. DW16SS DN ½" BSP



MATERIALS		
POS. Nr.	DESIGNATION	MATERIAL
1	Body	ASI316 / 1.4401
2	Cover	Brass (NickelPl.)
3	* Gasket	St.St./Graphite
4	* Glass	Borosilicate

* Available spare parts

SIZE DN	DIMENSIONS (mm)-Screwed				EN 1092-1 Flanges	
	A	B	C	WGT. Kgs	E	WGT. Kgs
1/2"	103	80	65	1,3	130	2,4
3/4"	103	80	65	1,3	130	3,4
1"	100	90	65	1,9	130	4,5

Different face-to-face dimensions on the flanged version, under request.