



INSTALLATION AND MAINTENANCE INSTRUCTIONS ADCAMAT POP-S PRESSURE OPERATED PUMP

GENERAL

- 1.The POP-S pumps are designed for the pumping of condensate, cold water and other group 2 fluids, without the use of electricity.They are specially recommended to return high temperature condensate back to boiler houses to save and conserve energy.
- 2.The installation procedure is a critical stage in a life of a pump and care should be taken to avoid damage to the pump or equipment.
- 3.The Adcamat automatic pump can lift hot condensate, oils and other liquids as high as 60m (200ft) or discharge against an equivalent total back pressure.The pump starts when there is something to pump and stops when there isn't.
- 4.Liquid flows by gravity into the pump through an inlet check valve lifting a float which,at the upper limit of its travel , opens the supply valve which allows steam or compressed air to enter the pump body.Pressure in the pump builds up until just sufficient to overcome back pressure.The pressurized liquid opens the outlet check valve and discharge commences.When the float reaches the minimum lower level it closes the steam or compressed air supply valve and opens the vent allowing the liquid to fill the pump again.

Warning !

- If malfunction of any other equipment or system operation failure may result in a dangerous overpressure ,overtemperature or even vacuum condition, a safety device must be included in the system to prevent such situations .
- Do not touch the equipment without appropriate protection during working operation because it may conduct heat if the used fluid is at high temperature.
- Before starting maintenance be sure that the equipment is not pressurized or hot .
- The equipments must be used within the working temperature and pressure limits laid down for them, otherwise they may fail (refer to nameplate and/or IS- Information Sheet).
- Do not remove the nameplate attached to the equipment.Serial number and other useful information is stamped on it.

INSTALLATION

- 1.Prior to install check that the product is suitable for the intended application : materials and pressure/temperature ratings.
- 2.Before to install remove plastic covers placed on flanges or connection ends. The equipment has an arrow or Inlet/Outlet designations.Be sure that it will be installed on the appropriate direction.
- 3.The pump must be handled carefully in order to avoid any mechanism damage.The pump must be installed at the lower level of the equipment to be drained and the exhaust DN 1" connection pointing upwards. For correct installation and operation of the pump, Y strainer, isolating valves and steam trap must be provided. Please refer to Information Sheet IS 9.110 E . Special application information can be obtained by contacting the distributor or Valsteam SA directly.
- 4.Be sure that the unit is level for proper operation.

MAINTENANCE

- 1.We recommend that the pressure operated pumps are serviced as necessary, at least every 12 months. Strainers, steam trap and receiver should be cleaned.
- 2.When reassembling make sure that all gasket faces are clean and always use a new gasket. Tighten cover bolts uniformly in a diagonal sequence.
- 3.For further information refer to the relevant pump brochure or consult our Sales Office.

BODY LIMITING CONDITIONS

RATING	PRESS. bar	TEMP. °C
DIN PN16	16	120
	14	198
ANSI CL.150	13	250
	16	120
	14	198

Application limits :

- Minimum density: 0.80 kg/dm³
- Maximum viscosity: 5° Engler
- Max.motive pressure: 0.5 to 8.6 bar
- Motive gas : steam or compressed air

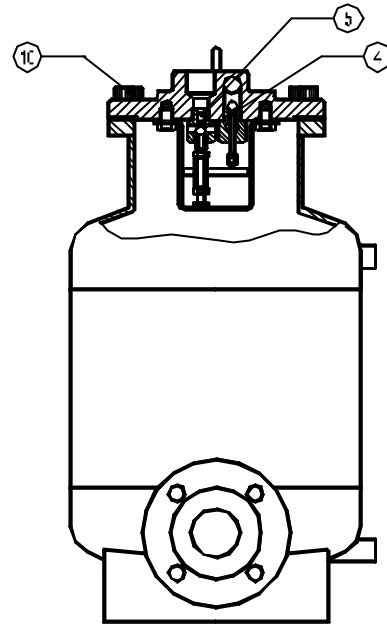
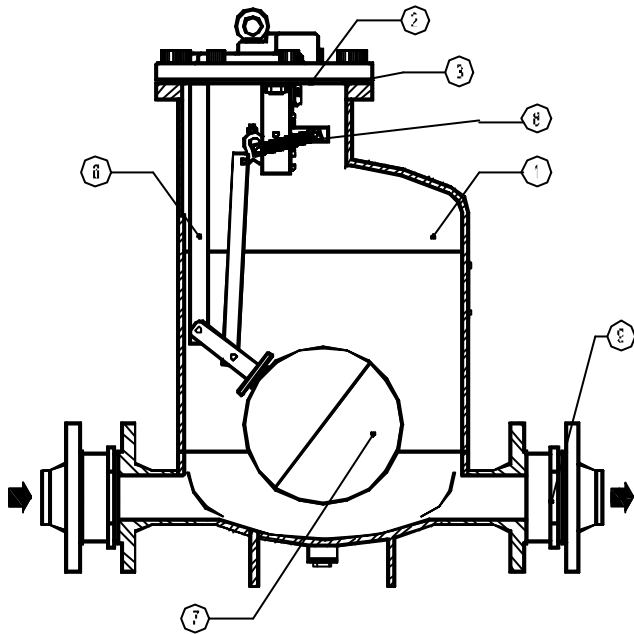
CE Marking :

This product have been designed for use on water, steam,air and other gases wich are in Group 2 of the PED - European Pressure Equipment Directive 97/23/EC and it comply with those requirements. All the sizes fall within category 2. The product carry the CE mark .

Supply operating pressure: from 0.5 to 8.6 bar

LOSS OF GUARANTEE : Total or partial disregard of above instructions involves loss of any right to guaran





PARTS LIST FOR ADCAMAT PUMP :

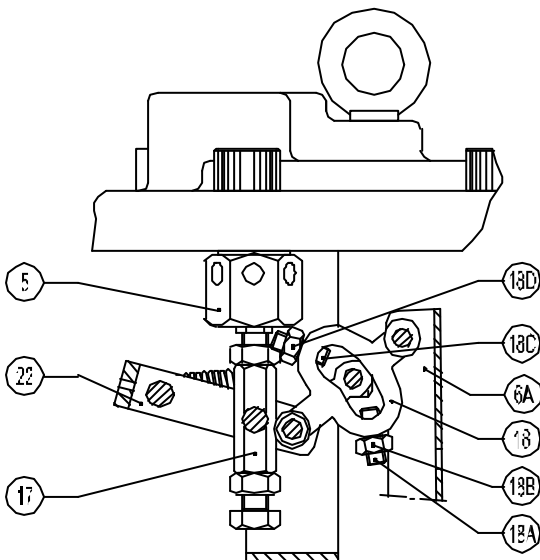
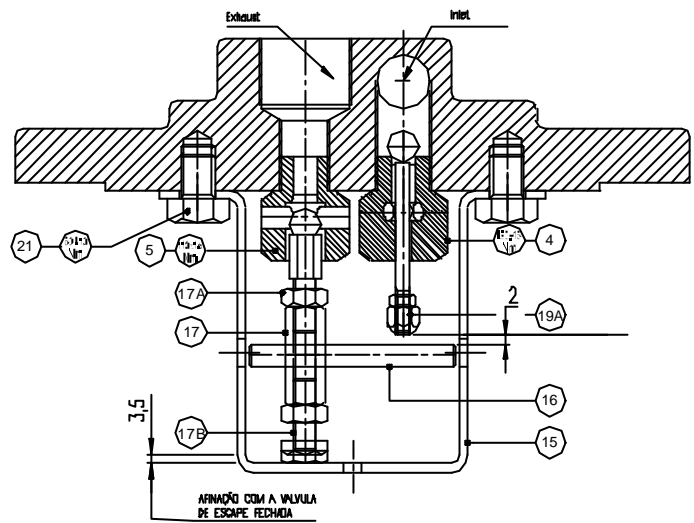
Code	Designation	Pump Size	Pos.Nr.	Qty.	Recommended tightening torques :		
					Pos.Nr.	Pump Size	Nm
A.95.5800.025	Inlet/Outlet valves	All	4 / 5	1 set	Nrs.10	All	85-95
A.95.5800.125	Float and gasket	All	3 / 7	1 set	Nrs.4	All	120
A.95.5800.225	Spring set	All	8	1 set	Nrs.5	All	110
A.95.5800.325	Cover gasket	All	3	1			

How to replace Inlet/Outlet valves :

With the float at the lowest position remove the bolts Nr.21 and disassemble the support Nr.15.

The valve set is supplied duly calibrated from the factory. Do not unscrew the nuts Nr.17A and 19A.

After replacing the valves and support, make sure that the mechanism is working correctly by manually operating the float.



Adjustment of upper level switch :

Tighten up screw nr.18A - decrease maximum level
 Untighten the screw nr.18A - increase maximum level

Adjustment of lower level switch :

Tighten up screw nr.18C - increase lower level
 Untighten the screw nr.18C - decrease lower level

IMPORTANT : The screws must not be adjusted without specific factory information.