

INSTALLATION AND MAINTENANCE INSTRUCTIONS

S25 SEPARATORS

GENERAL

1. Water is present in all steam and compressed air distribution pipelines systems. For maximum efficiency, steam must be saturated and dry. Careful draining and trapping will remove much of condensate but not all. The use of separators and appropriate condensate traps can solve the problem.

Warning !

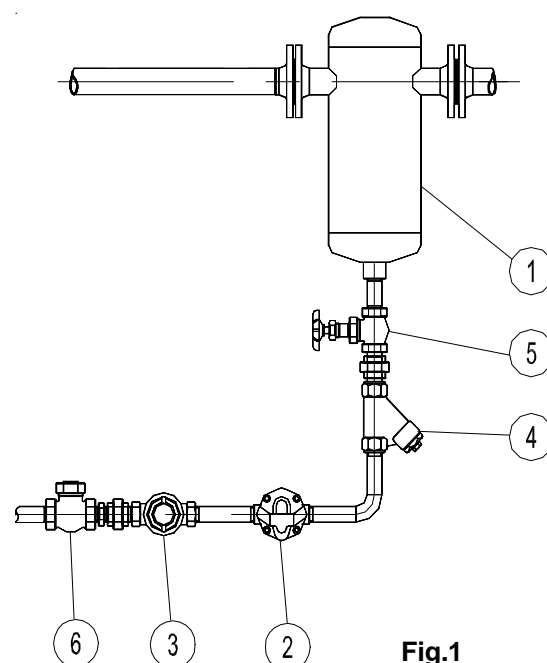
- If malfunction of any other equipment or system operation failure may result in a dangerous overpressure, overtemperature or even vacuum condition, a safety device must be included in the system to prevent such situations.
- Do not touch the equipment without appropriate protection during working operation because it may conduct heat if the used fluid is at high temperature.
- Before starting maintenance be sure that the equipment is not pressurized or hot.
- If the optional top connection is not being used, it must be closed with an appropriate carbon steel plug.
- Do not remove the nameplate attached to the equipment. Serial number and other useful information is stamped on it.

INSTALLATION

1. Prior to install check that the product is suitable for the intended application: materials and pressure/temperature ratings.
2. Before to install remove plastic covers placed on flanges or connection ends. The equipment has an arrow or Inlet/Outlet designations. Be sure that it will be installed on the appropriate flow direction.
3. External stresses that may be induced by the system doing to pipe expansion, etc, can affect this product. The necessary precautions are recommended during the system design and equipment assembly.
4. The separator must be installed on horizontal position always with the condensate discharge pointing downwards. A steam or compressed air trap is recommended to automatically discharge the condensate. A balancing pipe is recommended to be fitted with the compressed air trap.

MAINTENANCE

1. The separator don't need any specific type of maintenance. Regular inspection may be recommended by local authorities according to specific or general pipe and/or vessels assembly procedures.
- Estimated lifetime under satisfactory working conditions: 5 years; after this period we recommend the wall thickness examination using appropriated inspection equipment. Pour quality water or corrosive fluids will reduce this period.


Fig.1
LIMITING CONDITIONS

	PRESS. bar	TEMP. °C
DIN PN16	16	120
	a) 14	198
	13	250
ANSI CL.150	16	120
	a) 14	198
DIN PN 25	25	120
	a) 21	220
	17	300
DIN PN 40	40	120
	a) 32	239
	28	300
DIN PN 64	64	120
	a) 50	200
	40	300

a) PMO - Maximum operating pressure for saturated steam.

Minimum operating temperature: -10°C

GROUP 2 GASES CATEGORIES

RATING	SIZES DN	Category
DIN PN 16	15 - 25	SEP
	32 - 50	1
	65 - 125	2
	150 - 200	3
DIN PN 25	200	3
DIN PN 40	15 - 32	1
	40 - 80	2
	100 - 150	3
DIN PN 64	15 - 25	1
	32 - 50	2
	65 - 100	3
	125 - 200	4

Legend:

- 1-ADCA S25 centrifugal separator
- 2-FLT series float steam traps or FA series compressed air traps.
- 3-SW12 or DW40S sigh glasses
- 4-IS16 or IS116 strainer
- 5-Stop valve
- 6-Check valve

CE Marking :

This product have been designed for use on water, steam, air and other gases wich are in Group 2 of the PED-European Pressure Equipment Directive 97/23/EC and it comply with those requirements.

The product carry the CE mark when falling in category 1 and above.