



INSTALLATION AND MAINTENANCE INSTRUCTIONS NON-RETURN VALVES RT25 – RD40

GENERAL

1. These instructions must be carefully read before any work involving products supplied by VALSTEAM ADCA ENGINEERING S.A. is undertaken.
2. The installation procedure is a critical stage in a life of a valve and care should be taken to avoid damage to the valve or equipment.

Warning!

- At start up, the presence of small particles in the fluid (dirt, scale, weld splatters, etc) may cause an unperfected closure of the seat. If this occurs, proceed to an accurate cleaning.
- Do not touch the equipment without appropriate protection during working operation because it may conduct heat if the used fluid is at high temperature.
- Sharp-edged interior parts can cause cuts on hands, appropriate protection gloves should be used when handling the valve.
- Before starting maintenance be sure that the equipment is not pressurized or hot.
- The equipments must be used within the working temperature and pressure limits laid down for them, otherwise they may fail (refer to nameplate and/or IS- Information Sheet).
- Do not remove the nameplate attached to the equipment. Serial number and other useful information is stamped on it.

INSTALLATION

1. RT and RD valves can be installed in any position according to the conditions stated in the catalogue.
2. Prior to install check that the product is suitable for the intended application: materials and pressure/temperature ratings.
3. Before to install remove plastic covers placed on connection ends (RT25 only). The equipment has an arrow or Inlet/Outlet designations. Be sure that it will be installed on the appropriate direction.
4. Take care with jointing material to ensure that none may be permitted to block or enter the valve.
5. Wafer type valves are installed between flanges. The centring is executed at the body integrated centre ring by means of the flange connecting screws.
6. Disc check valves are not suitable for use where heavily oscillatory flow exists such as near compressors, diaphragm pumps, etc.

Recommended limit of operation with soft seats (°C)			
EPDM (E)	NBR (N)	VITON (V)	PTFE (T)
130°	95°	180°	180°



MAINTENANCE

1. Only qualified skilled workers are permitted to do maintenance to check valves. Since these valves have integral seat maintenance costs must be evaluated by professional people in order to decide if it is acceptable or if a non-maintainable situation has to be considered.
2. When reassembling make sure that all gasket faces are clean and always use a new gasket. Tighten cover bolts uniformly in a diagonal sequence.
3. For further information refer to the relevant IS brochure or consult our Sales Office.

CE MARKING

RT25 :

CE MARKING	
PN 25	Category
DN3/8" to DN 1 1/2"	SEP - art. 3, paragraph3
DN 2"	Category1 (CE marked)

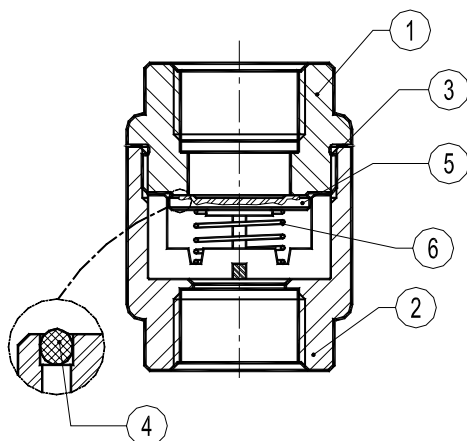
RD40 DN15 – DN100:

CE MARKING (PED - European Directive 97/23/EC)		
PN 25	PN 40	Category
DN15 to DN40	DN15 to DN32	SEP - art. 3, paragraph3
DN50 to DN100	DN40 to DN80	Category 1 (CE Marked)
-	DN100	Category 2 (CE Marked)

RD40 DN125 – DN200

CE MARKING (PED - European Directive 97/23/EC)			
PN 10/16	PN 25	PN 40	Category
DN125 to DN200	DN125	/	Category 1 (CE marked)
/	DN150-DN200	DN125	Category 2 (CE marked)
/	/	DN150-DN200	Category 3 (CE marked)

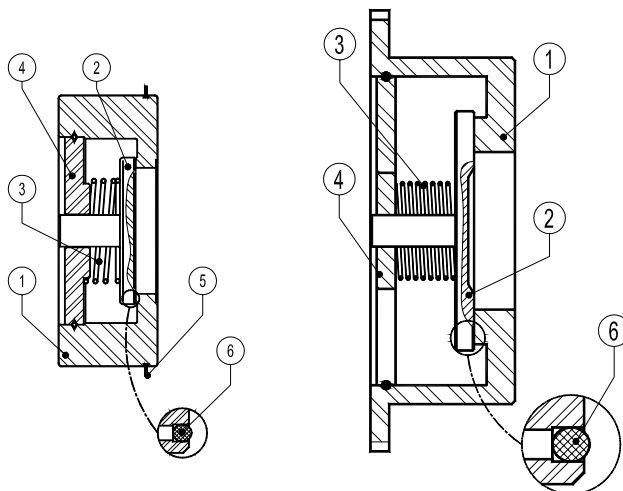
PARTS LIST FOR RT25 NON-RETURN VALVES :



CODE	DESIGNATION	VALVE SIZE DN	POS.NR.	QTY.
A.961.1100.015	Spring	1/4" - 1/2"	6	1 set
A.961.1100.020	Spring	3/4"	6	1 set
A.961.1100.025	Spring	1"	6	1 set
A.961.1100.032	Spring	1 1/4"	6	1 set
A.961.1100.040	Spring	1 1/2"	6	1 set
A.961.1100.050	Spring	2"	6	1 set
A.961.1100.115	Metal valve disc *	1/4" - 1/2"	5	1 set
A.961.1100.120	Metal valve disc *	3/4"	5	1 set
A.961.1100.125	Metal valve disc *	1"	5	1 set
A.961.1100.132	Metal valve disc *	1 1/4"	5	1 set
A.961.1100.140	Metal valve disc *	1 1/2"	5	1 set
A.961.1100.150	Metal valve disc *	2"	5	1 set

* In case of soft seating please add the suffix letter to the actual code (see catalogue).

Example : A.961.1100.115E, valve disc with EPDM seal.

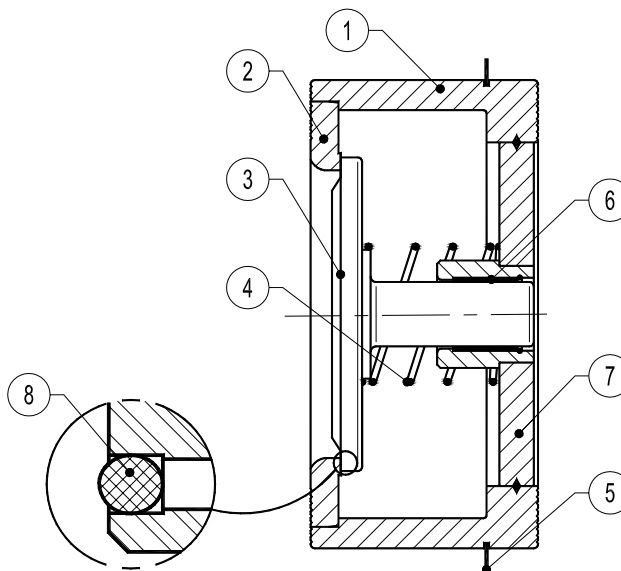
PARTS LIST FOR RD40 NON-RETURN VALVES DN15 - DN100 :


CODE	DESIGNATION	VALVE SIZE DN	POS.NR.	QTY.
A.961.1140.015	Spring	15	3	1 set
A.961.1140.020	Spring	20	3	1 set
A.961.1140.025	Spring	25	3	1 set
A.961.1140.032	Spring	32	3	1 set
A.961.1140.040	Spring	40	3	1 set
A.961.1140.050	Spring	50	3	1 set
A.961.1140.065	Spring	65	3	1 set
A.961.1140.080	Spring	80	3	1 set
A.961.1140.100	Spring	100	3	1 set
A.961.1140.115	Metal valve disc *	15	2	1 set
A.961.1140.120	Metal valve disc *	20	2	1 set
A.961.1140.125	Metal valve disc *	25	2	1 set
A.961.1140.132	Metal valve disc *	32	2	1 set
A.961.1140.140	Metal valve disc *	40	2	1 set
A.961.1140.150	Metal valve disc *	50	2	1 set
A.961.1140.165	Metal valve disc *	65	2	1 set
A.961.1140.180	Metal valve disc *	80	2	1 set
A.961.1140.1100	Metal valve disc *	100	2	1 set

* In case of soft seating please add the suffix letter to the actual code (see catalogue).

Example : A.961.1140.115E, valve disc with EPDM seal.

PARTS LIST FOR RD40 NON-RETURN VALVES DN125 – DN200 :



CODE	DESIGNATION	VALVE SIZE DN	POS.NR.	QTY.
A.961.1150.125	Spring	125	4	1 set
A.961.1150.150	Spring	150	4	1 set
A.961.1150.200	Spring	200	4	1 set
A.961.1150.1125	Metal valve disc *	125	3	1 set
A.961.1150.1150	Metal valve disc *	150	3	1 set
A.961.1150.1200	Metal valve disc *	200	3	1 set

* In case of soft seating please add the suffix letter to the actual code (see catalogue).

Example : A.961.1150.1125E, valve disc with EPDM seal.

LOSS OF GUARANTEE: Total or partial disregard of above instructions involves loss of any right to guarantee.