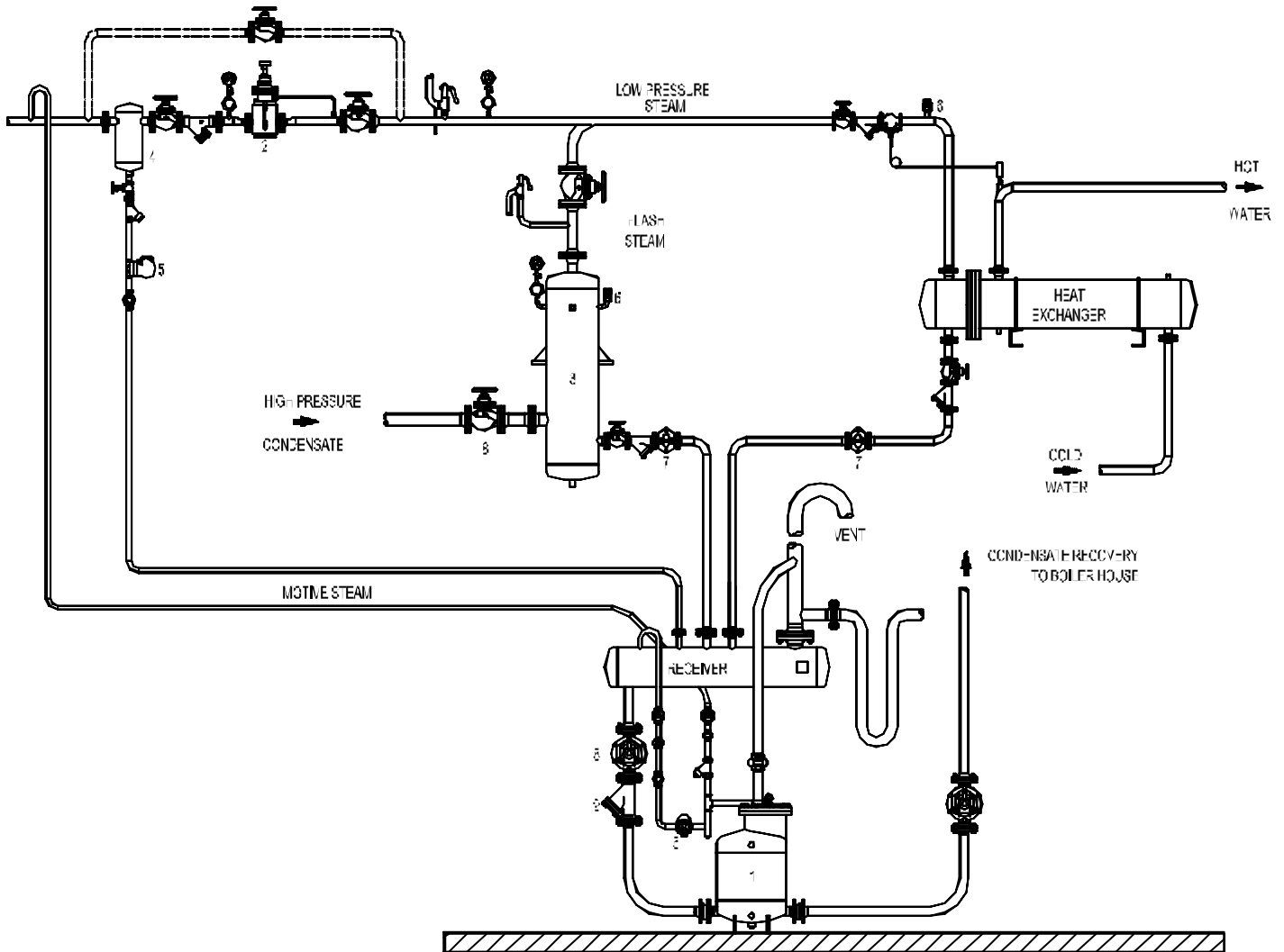


**FLASH VESSELS RV SERIES**  
**Typical Installation**  
**( Heat recovery systems )**



**MATERIALS**

POS.	DESIGNATION	MODEL
1	ADCAMAT PUMP	POP-S
2	PRESSURE REDUCING VALVE	PRV 37
3	FLASH VESSEL	RV
4	STEAM SEPARATOR	S 25
5	FLOAT&THERMOST.STEAM TRAP	FLT 17
6	VACCUM BREAKER	VB 21
7	FLOAT&THERMOST.STEAM TRAP	FLT 16
8	ISOLATING VALVE	---
9	Y STRAINER	IS 16

Remarks :  
 Materials according to the operating pressures.  
 Different assembling designs may be produced on request .