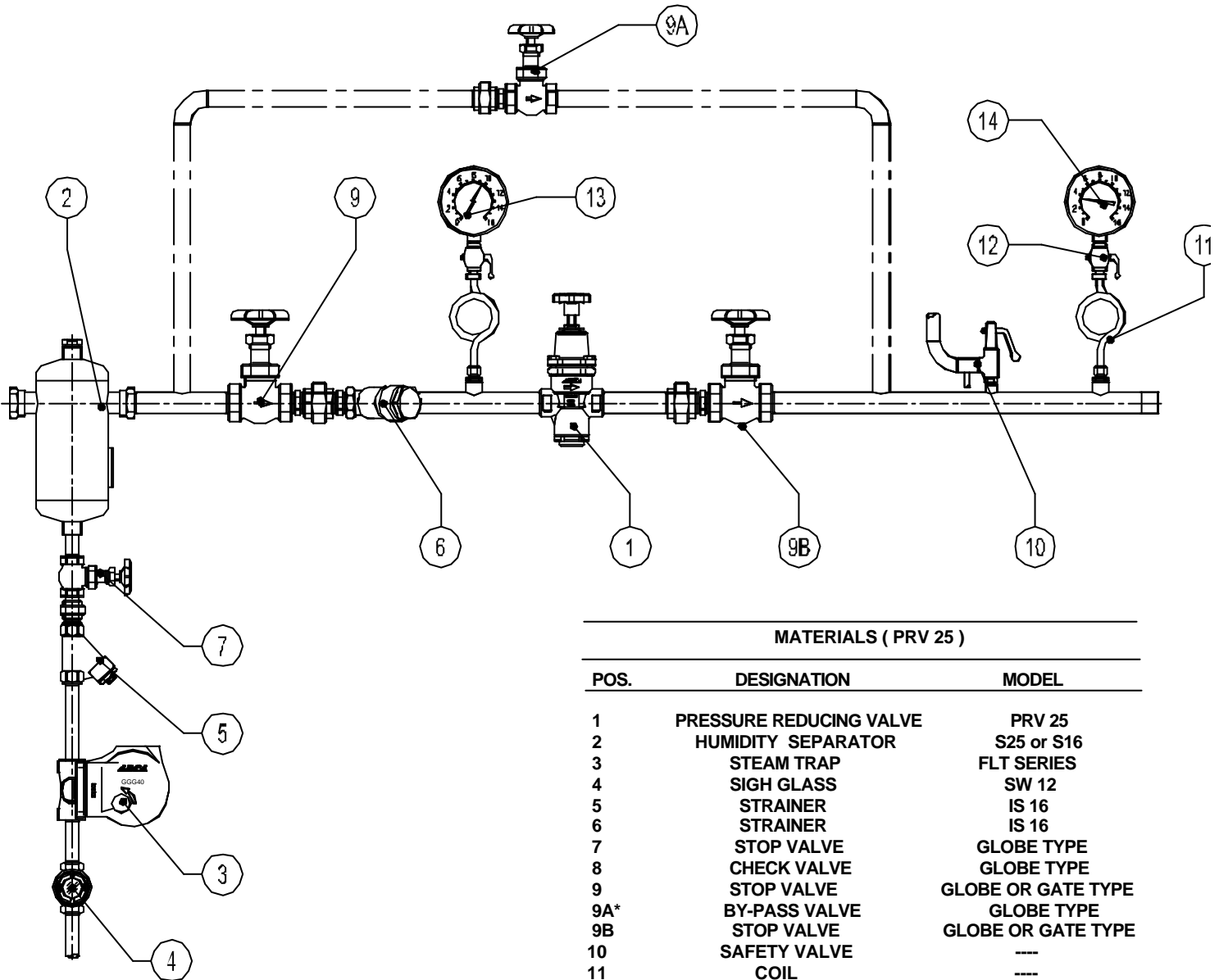


PRESSURE REDUCING VALVE PRV25 Typical Reducing Valve Installation



MATERIALS (PRV 25)

POS.	DESIGNATION	MODEL
1	PRESSURE REDUCING VALVE	PRV 25
2	HUMIDITY SEPARATOR	S25 or S16
3	STEAM TRAP	FLT SERIES
4	SIGH GLASS	SW 12
5	STRAINER	IS 16
6	STRAINER	IS 16
7	STOP VALVE	GLOBE TYPE
8	CHECK VALVE	GLOBE TYPE
9	STOP VALVE	GLOBE OR GATE TYPE
9A*	BY-PASS VALVE	GLOBE TYPE
9B	STOP VALVE	GLOBE OR GATE TYPE
10	SAFETY VALVE	---
11	COIL	---
12	GAUGE COCK	---
13	UPSTREAM PRESSURE GAUGE	---
14	DOWNSTREAM PRESSURE GAUGE	---

Remarks :

* By-pass is optional .In case the by-pass is not allowed than stop valve 9B should be placed after pressure gauge 14 allowing the isolation of safety valve.

PN classes and materials according to the operating pressures.

Installation instructions are available (IMI - PRV25) and typical assembling drawing .

Special assembling designs may be produced on request .