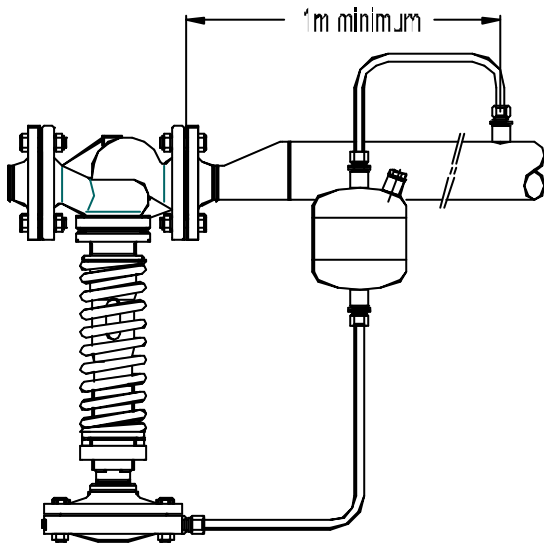
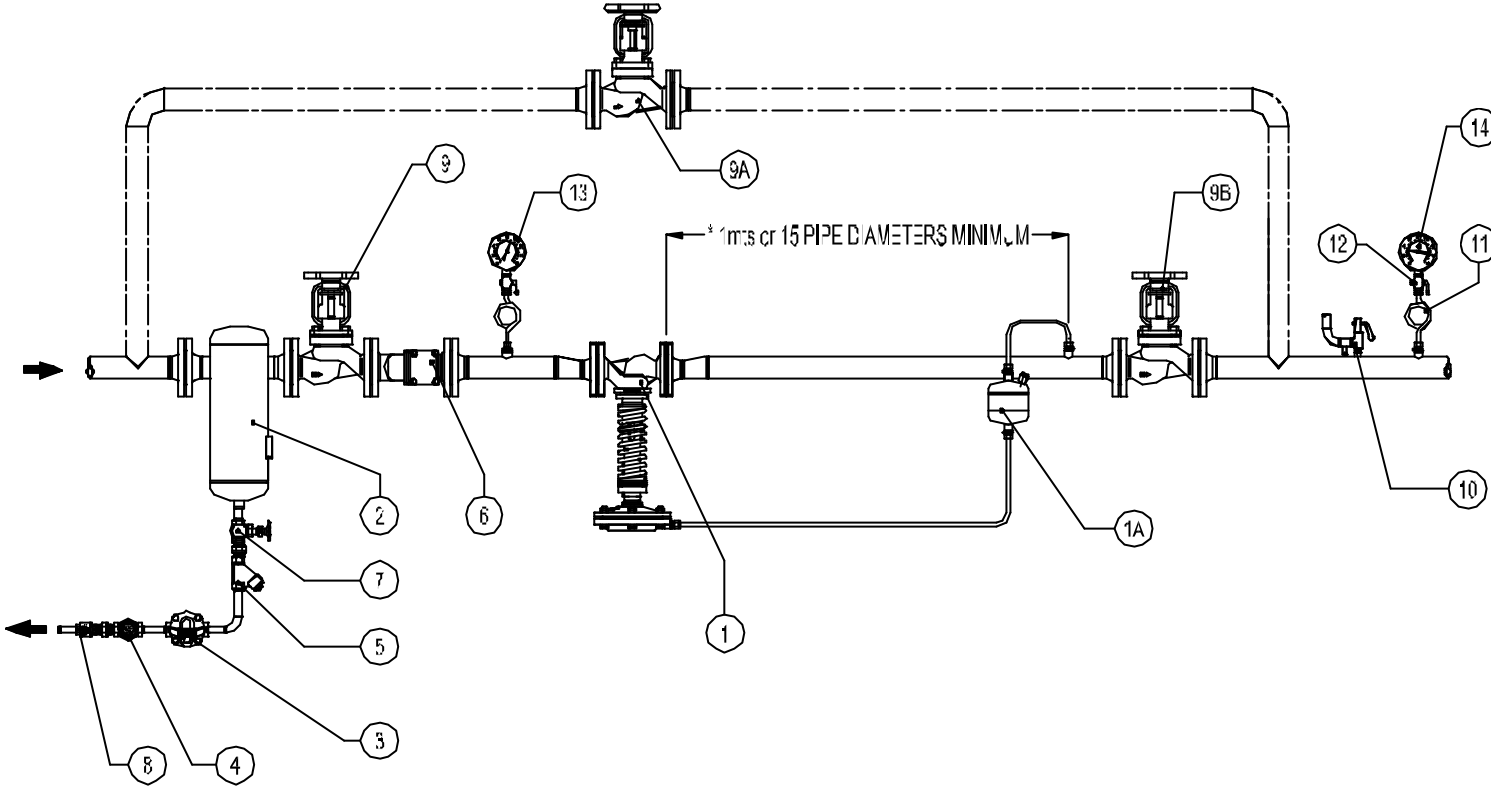


**PRESSURE REDUCING VALVE RP 45**  
**Typical Reducing Valve Installation**



**MATERIALS ( RP 45 )**

POS.	DESIGNATION	MODEL
1	PRESSURE REDUCING VALVE	RP 45
1A	WATER SEAL POT	STEEL
2	HUMIDITY SEPARATOR	S 25
3	STEAM TRAP	FLT SERIES
4	SIGH GLASS	SW 12
5	STRAINER	IS 16
6	STRAINER	IS16F
7	STOP VALVE	GLOBE TYPE
8	CHECK VALVE	GLOBE TYPE
9	STOP VALVE	GLOBE OR GATE TYPE
9A*	BY-PASS VALVE	GLOBE TYPE
9B	STOP VALVE	GLOBE OR GATE TYPE
10	SAFETY VALVE	---
11	COIL	---
12	GAUGE COCK	---
13	UPSTREAM PRESSURE GAUGE	---
14	DOWNSTREAM PRESSURE GAUGE	---

**Remarks :**

\* By-pass is optional .In case the by-pass is not allowed than stop valve 9B should be placed after pressure gauge 14 allowing the isolation of safety valve.

PN classes and materials according to the operating pressures.

The balance pipe connection is recommend to enter downstream pipe at a minimum of 1 metre from valve. Installation instructions are available (IMI - RP45) and typical assembling drawing .

Special assembling designs may be produced on request .