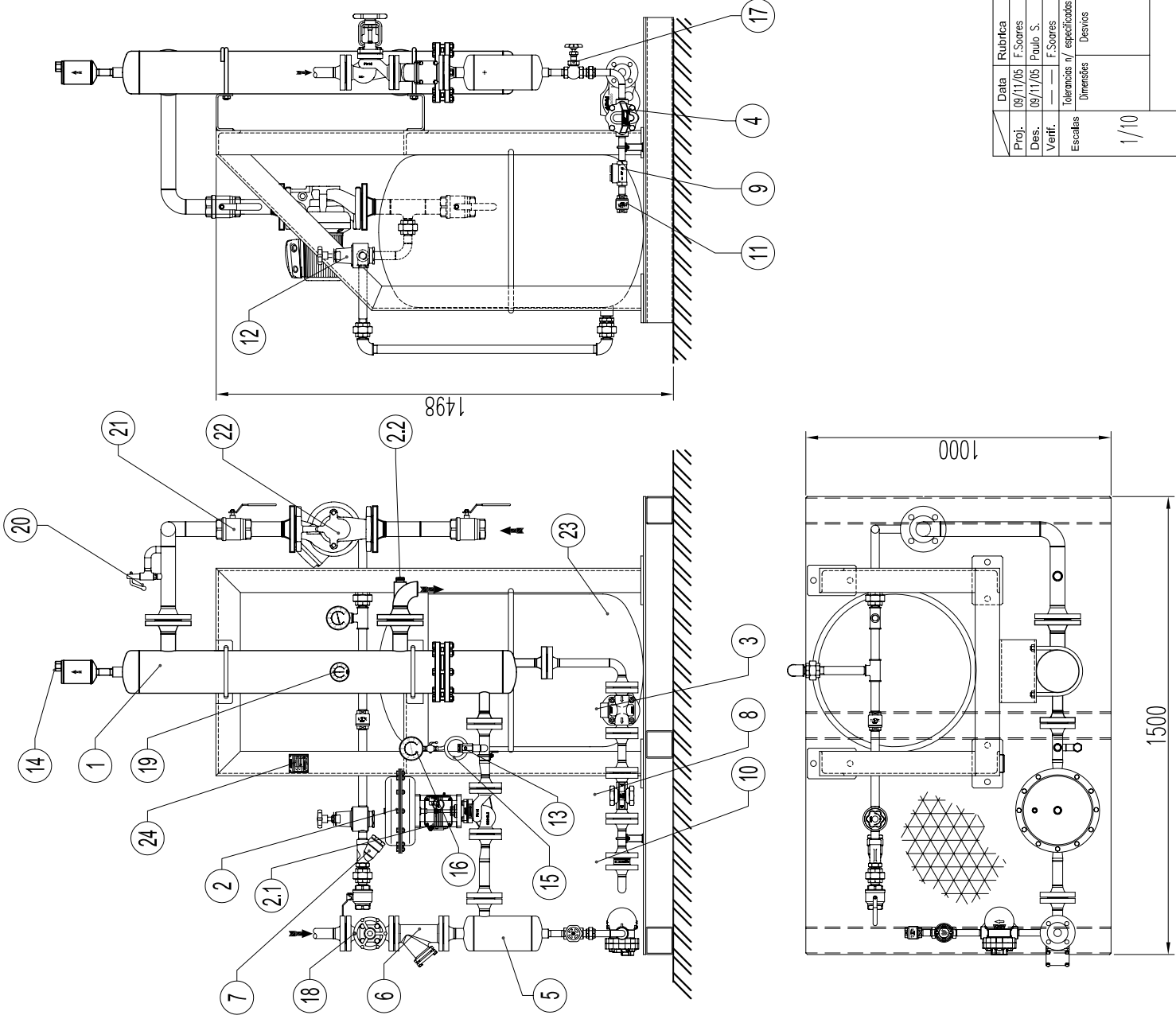


WORKING CONDITIONS			
TUBE SIDE	STEAM		Bar
SHELL SIDE	WATER		°C
	Inlet		°C
	Outlet		°C
OUTPUT			Kw
Reg.		Yr. 200	



Nr.	Designation	Ref./DN	QTY	✓
1	ADCATHERM Heat exchanger		1	
2	ADCATROL Control valve		1	
2.1	Electropneumatic positioner		1	
2.2	PT 100 pocket		1	
3	ADCA FLT Float & thermostatic steam trap		1	
4	ADCA FTL Float & thermostatic steam trap		1	
5	ADCA S25 Humidity separator		1	
6	ADCA IS16F Y strainer		1	
7	ADCA IS16 Y strainer		1	
8	ADCA DW40S Sight glass		1	
9	ADCA SW12 Sight glass		1	
10	ADCA RD40 Check valve		1	
11	ADCA RT25 Check valve		1	
12	ADCA PRV30 Pressure reducing valve		1	
13	ADCA VB21 Vacuum breaker		1	
14	ADCA AE16 Air eliminator		1	
15	Gauge Coil		1	
16	Pressure gauge		1	
17	Globe valve		1	
18	Globe valve		1	
19	Temperature indicator		1	
20	Safety valve		1	
21	Ball valve		2	
22	Circulating pump		1	
23	Expansion vessel		1	
24	Identification plate		1	

Data	Rubrica
Proj. 09/11/05	F. Soares
Des. 09/11/05	Paulo S.
Verif. —	F. Soares
Identificacão / especificações	
Dimensões	Desvios
1/10	

VALSTEAM ADCA		Proc. 0.490
Description / Descrição: ADCATHERM "PWHU" Packaged Water Heating Unit Conj. produção de água quente		Des.Nº: ADPWHU.01.2173
		Rev. 00 Em: 0000/00